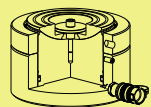


CSLP Series



Capacity:
60-520 ton
Stroke:
45-50 mm
Maximum Operating Pressure:
700 bar

CSLP 液壓單動，扁平鎖帽千斤頂

- 扁平設計適用於狹窄空間。
- 主軸及鎖帽特殊處理，防止長時間密合卡死。
- 安全鎖帽可於壓力釋放後維持支撐。
- 傾斜墊塊可減少偏荷載危險。
- 溢油孔可防止超揚程。
- 將到達全揚程時出現紅色警戒線。
- 垂直單動重力回縮。
- 表面粉體塗裝美觀抗腐蝕、防銹。
- 各型號均含SQB-3/8UF 快速接頭及防塵蓋。

Single-Acting, Low Height, Lock Nut Cylinder

- ※Low height design for use in confined space.
- ※Special coating on thread piston and lock ring to prevent anti-seize over long period of time.
- ※Safety lock ring for mechanical load support even with hydraulic pressure released.
- ※Equipped with tilt saddle to minimize off center-load.
- ※Equipped with overflow port to prevent over stroke.
- ※Equipped with red indicate line to warn operator when cylinder reach full stroke.
- ※Load return type-for vertical lifting only.
- ※Powder coat finish for better corrosion resistance.
- ※All cylinders are equipped with SQB-3/8UF female coupler & dust cap.

	焊提把 Weldable
	吊環螺栓 Eyebolt
	活動提把 Removable strap handles
	螺牙式活動提把 Thread

提把型式 Handle type	
(S) : 標準配件 standard equipped	
(O) : 選配 option	
● 焊提把 Weldable	
★ 吊環螺栓 Eyebolt	
▲ 活動提把 Removable strap handles	
■ 螺牙式活動提把 Thread	

特殊潤滑處理
Special Lubricant Coating鎖帽
Lock ring主軸
Piston

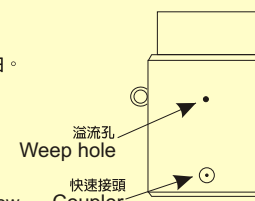
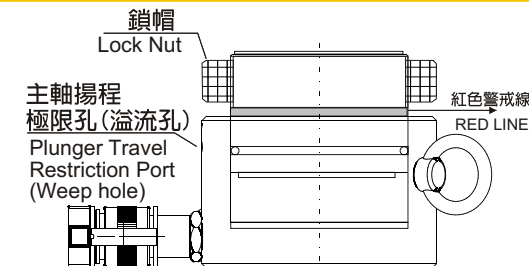
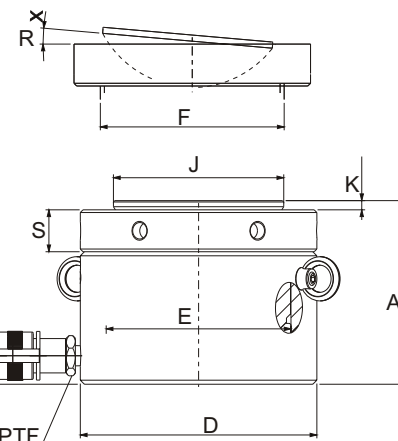
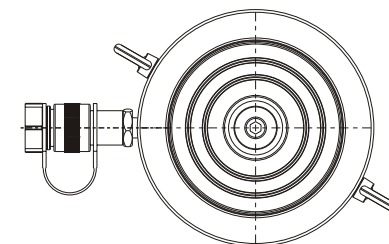
提把型式 Handle type	型 號 Model Number	外部尺寸 Outer Dimension					
		能 力 Cylinder Capacity	揚 程 Stroke	受壓面積 Cylinder Effective Area	總油量 Oil Capacity	本身高 Collapsed Height	伸長總高 Extended Height
(S)		ton (kN)	(mm)	cm ²	cm ³	A (mm)	(mm)
★	CSLP-602	60 (606)	50	86.6	432	125	175
★	CSLP-1002	100 (1027)	50	146.8	734	137	187
★	CSLP-1602	160 (1619)	45	231.3	1040	148	193
★	CSLP-2002	200 (1999)	45	285.6	1285	155	200
★	CSLP-2502	260 (2567)	45	366.8	1650	159	204
★	CSLP-4002	400 (3916)	45	559.5	2517	178	223
★	CSLP-5002	520 (5114)	45	730.6	3287	192	237



適用於單動，高噸位千斤頂
CSLP, CSLL, CSLS 系列
到達揚程極限時，溢流孔流出液壓油。
藉此警告並保護主軸超揚昇。

Apply to Single-acting, High
tonnage cyl. CSLP, CSLL and
CSLS series

When stroke limit is reached; overflow
port ("weep hole") spurt oil to prevents
piston from being overextended.

溢流孔
Weep hole
快速接頭
Coupler主軸全揚程示意圖
Plunger show at maximum extension

3/8"-18NPTF



墊塊/鞍座 Saddle

所有 CSLP-系列均配有整體性之傾斜
墊塊以預防側荷重之危險。

All CSLP-Series come with tilt saddles to
minimize off center-load damage.

高揚程鎖帽千斤頂
Longer Stroke Lock Nut

請參考CSLL-系列。

For lock nut applications that require longer
stroke lengths, see CSLL-Series.



控制閥 Control Valve

可搭配例如SV-82類的針閥來控制油
壓缸上升和下降的速度 (請參考 SV-系列)

Fitting needle valve such as SV-82 is used
to control cylinder speed during lifting
and lowering. (See SV-Series)

外部尺寸 Outer Dimension								
外 徑	內 徑	主軸直徑	底部前進 油孔位置	墊塊直徑	凸出高度	墊塊最大 傾斜角度	鎖帽高度	重 量
Outside Diameter	Cyl. Bore Diameter	Plunger Diameter	Base to Advance Port	Saddle Diameter	Saddle Protrusion from Plngr.	Saddle Max. Tilt Angle	Lock Nut Height	Weight
D (mm)	E (mm)	F (mm)	H (mm)	J (mm)	K (mm)	R	S (mm)	(kg)
140	105.0	Tr104X4	19	96	6	5°	28	15
175	136.7	Tr136X6	21	126	8	5°	31	26
220	171.6	Tr171X6	27	160	9	5°	40	44
245	190.7	Tr190X6	30	180	10	5°	43	57
275	216.1	Tr216X6	32	200	11	5°	44	74
350	267.0	Tr266X6	39	250	11	4°	55	134
400	305.0	Tr305X6	48	290	10	3°	62	189